

# MONTHLY MEMBERSHIP PROGRESS REPORT

LOCATION DELAWARE

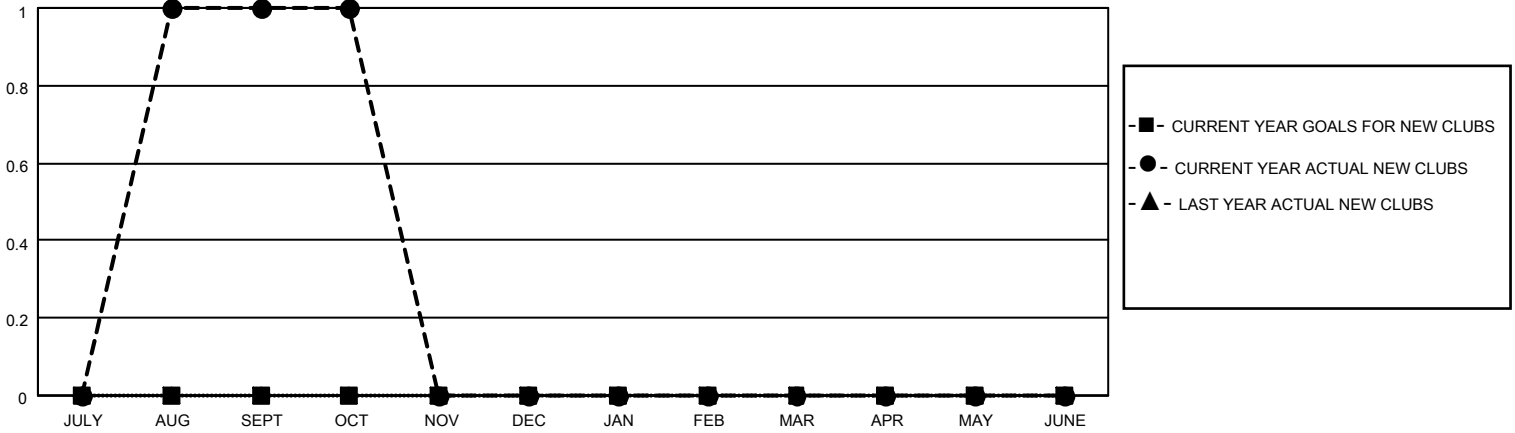
District 22 D

Results as of: 10/31/2022

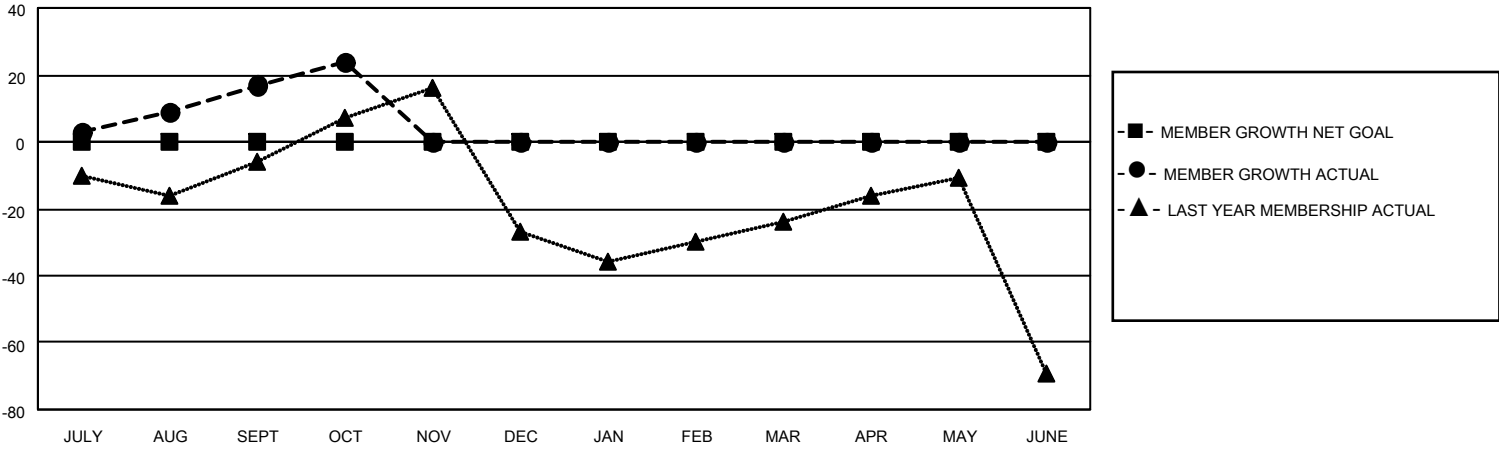
Clubs			
RESULTS FOR 2022-2023			
QUARTER	NEW CLUB GOAL	NEW CLUBS	DROPPED CLUBS
JULY/AUG/SEPT	0	1	0
OCT/NOV/DEC	0	0	0
JAN/FEB/MAR	0	0	0
APR/MAY/JUNE	0	0	0

Members			
RESULTS FOR 2022-2023			
QUARTER	MEMBER GROWTH NET GOAL	MEMBER GROWTH ACTUAL	DROPPED MEMBERS ACTUAL (including transfers)
JULY/AUG/SEPT	0	52	27
OCT/NOV/DEC	0	17	10
JAN/FEB/MAR	0	0	0
APR/MAY/JUNE	0	0	0

**GOALS AND ACTUAL NEW CLUBS CUMULATIVE**



**GOALS AND ACTUAL MEMBERS CUMULATIVE**



**DROPPED CLUBS: 0**

**12 CLUBS OF 34 ADDED 1 OR MORE NEW MEMBERS**

**GENDER DISTRIBUTION**

MALE	694 (59.88%)
FEMALE	465 (40.12%)
NON BINARY	0 (0.00%)
PREFER NOT TO ANSWER	0 (0.00%)

**DROPPED MEMBERS**

[CLICK HERE FOR CUMULATIVE MEMBERSHIP DATA](#)

DECEASED	3
CLUB CANCELLED	0
OTHER	34
<b>TOTAL</b>	<b>37</b>

TOTAL FAMILY UNIT MEMBERS 218

FAMILY MEMBERS PAYING HALF DUES 112